



March 2016

Velocitas #103

INSTALLATION AND CERTIFICATION!



[BU Installation](#)

[MIT Certification](#)

The Fraternity has two expansion events scheduled in April. Please see the links above to register your attendance at the **Psi Delta Chapter Installation at Boston University April 9** on the BU campus. We

are proud to announce that our newest colony will be certified **April 16** at the **Massachusetts Institute of Technology**.

CHAPTER PETITIONS!



[CWRU Petition](#)
[CWRU Ballot](#)

[SBU Petition](#)
[SBU Ballot](#)

[CBU Petition](#)
[CBU Ballot](#)

We are proud to present petitions received from three Theta Tau colonies at the:

Case Western Reserve University

Stony Brook University

Christian Brothers University

A great deal of work has been put into each of these submissions. Please review the petitions and ballots via the links above, and we ask that you vote on each one right away.

2016 NATIONAL CONVENTION JULY 28-31

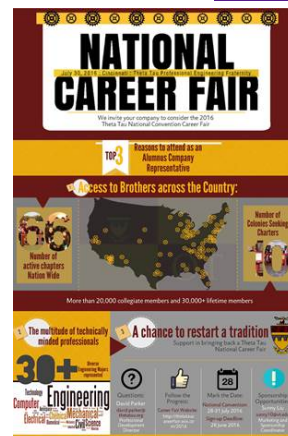
Connect

- [Facebook](#)
- [Twitter](#)
- [LinkedIn](#)
- [Instagram](#)
- [Shop](#)

Fraternal Law

[March 2016](#)

**2016
Convention
Career Fair
Info**





[Convention Registration/Reservations](#)

[Host Hotel Reservation](#) [Credential Form A](#)

We are pleased to announce that registration for the **2016 National Convention** is now open! All roads led to **Cincinnati**! Join us **July 28-31**. All members are invited and encouraged to attend. It is a unique **opportunity to learn, share, grow, celebrate, and deliberate** the future of our Fraternity.

Moreover, our Cinci host hotel [Millennium Cincinnati](#) is conveniently located **downtown just a few blocks from the waterfront, stadiums, museums, shopping**, and more than can be named here. Learn more about Cincinnati at the [Visitors Bureau](#). Stay tuned for updates for a schedule of planned outings during the Convention.

Theta Tau laws require that each chapter be represented in official capacity by a Delegate and Alternate. Those elected to serve as their chapter/colonies official representatives are to be elected in accord with Constitution, Article VI, Section 3, and Bylaws, Chapter III, Convention, Section 13, and reported to the Central Office. Please consult these laws prior to election of these official representatives, and then report said election using Credential Form A below as soon as they have been determined. Delegates and Alternates from chapters/colonies that have filed Credential Form A with our Central Office have been sent detailed additional information about the National Convention.

[Theta Tau Convention Registration Form](#)

[Hotel Reservation Link](#)

[Cincinnati Airport \(CVG\)](#)

[Transportation options from airport to hotel](#)

[Delegate/Alternate Letter/Instructions](#)

[Expense Policy](#)

[Chapter Reports](#)

Join the Online Community

[Register here](#)

About Us

Theta Tau
Professional
Engineering
Fraternity

The nation's
Foremost
Fraternity for
Engineers

Founded 1904

[Travelling Award/Trophy Memo](#)**Get involved**

- [Events](#)
- [Donate](#)
- [Volunteer](#)

OUTSTANDING STUDENT MEMBER[OSM Self Evaluation](#)**OSM Certification & Selection**

Service to the Fraternity at all levels is recognized through selection by each chapter of its Outstanding Student Member for the 2015-16 school year. Of these, one is named the national Fraternity's Robert E. Pope Outstanding Student Member. OSM self evaluations and certification are due April 30 via the Scholar Select site. Each student member should

complete the online application at:

<https://app.smarterselect.com/programs/30867-Theta-Tau>

Selection is based on information provided on a self-evaluation form to be completed by each student member. This is a valuable professional development experience. Members are encouraged to collaborate in recalling one another's service. Return evaluation sheets completed by student members and the Certification Form to the Central Office. The national Fraternity provides a certificate and award dangle for each chapter's honoree.

ENGINEERING LEADERS

*for Service,
Profession, and
Brotherhood*

GRADUATION MERCHANDISE / GIFTS[Stole w/CofA or Greek Letter](#)[Medallions w/CofA](#)[Chords](#)

Available through the [Online Store](#), the Central Office now stocks Graduation Stoles for sale to your members approaching graduation. The cost is \$20 each and come in the Fraternity's Official Colors with either the Greek Letters or the Coat of Arms embroidered. Coat of Arms Graduation Medallions are also now available for \$18. Use the Online Store to purchase or email/fax the completed hardcopy form linked above to the Central Office. Graduation Chords (at \$12 each) are also available from the Central Office, but order early as inventory of these items depletes rapidly.

YEAR END FINANCIAL DUTIES

As the school year winds down, it is necessary for each chapter and colony to bring its financial account up to date both with its own members, but also with

the national Fraternity. Chapters in financial delinquency are subject to remediation and disciplinary measures in accord with our laws.

Additionally, Intuit will be discontinuing its "Intuit Payment Network" to replace it with a comparable online payment system. Unfortunately, the two systems from Intuit are not compatible. As a result, the unique url payment link for items invoiced prior to March 31 will no longer function beyond May 15. We will implement the new Intuit payment system April 1. Payments for older invoices, made after May 15, can still be made via the Square payment site or via check mailed to the Central Office.

FORMS DUE SUMMARY

[NCR Semester School](#)

[NCR Quarter School](#)

[Annual Report Semester School](#)

[Annual Report Quarter School](#)

Annual Report is due May 1 in accord with our laws. **The semester end also requires submission of Membership Status Change and Initiation reports** within 2 weeks of the initiation date.

Consistent with practice for the last couple years, **each chapter is to contemporaneously maintain record of activities, events, and member participation via the Annual Report** files above. In completing this contemporaneously, your chapter will automatically/continuously be completing the Annual Report (the attendance/ participation sheet is linked to the annual report sheets). **Use the participation/ attendance worksheets; the Annual Report worksheets are locked and cannot be edited**

Theta Tau Central Office

1011 San Jacinto, Suite 205 Austin, TX 78701

Phone: 512.472.1904 | Fax: 512.472.4820

central.office@thetatau.org | www.thetatau.org

[Privacy Policy](#) | [Unsubscribe](#)